

Exhibitors & Trade

Sheffield Park Platforms
Bluebell Railway Museum
Second-hand Railway Items
Country Park Models
Supercast

The Birch Grove Suite
The Fenchurch Fund
Horton Warf 009
West Hoathly 00
Portlock 009
West Green Diesel MPD 00
The Pullman Society

The Locomotive Workshop and Yard

Invicta Gauge 1
Lional Club
Thornbury Hill
David Wills
The Camelot Society
The Brighton Atlantic Group
BR Standard Clas 2
Project 84030

The Maintenance Shed
Aspire Gifts & Models
Worthing Model Engineering
SP

Fawcett Street &
Scallywag Corner
9F Club
West Sussex N Gauge Shop
NE Where
The Wagon Yard
Going Loco



Bentley Miniature
Railway
7 1/4 inch featuring
on the locomotive
yard at Sheffield
Park Station

**Carriage and Wagon
Workshop**
Bigbury
Carriage & Wagon Models
Wagon Trade
Dapol
75D Trading
Pulborough (P4)
Haldon Lane
Burleigh Arches 0
Small N Working
Vine Lane
Heritage in Motion
Chiltern Hills Vintage Trains
Double 0 & 3 Rail

**Horsted Keynes
Platforms and Rooms**
Second-hand Railway Items
Andy Dayon
Aldermouth 0
Barry Jones
Andy Lynch
Heath Models
A & N Rail Models
Colins

Saturday Morning

Set		C	A	B	C	A	B
Sheffield Park	DEP		9:30	10:10	10:50	11:45	12:40
Horsted Keynes	DEP		9:47	10:27	11:10	12:05	1:00
Kingscote	DEP		10:02	10:42	11:27	12:22	1:17
East Grinstead	ARR		10:10	10:50	11:35	12:30	1:25
East Grinstead	DEP		10:30	11:15	12:10	1:00	1:55
Kingscote	DEP		10:46	11:30	12:25	1:20	2:15
Horsted Keynes	DEP	9:50	11:10	12:05	1:00	1:55	2:50
Sheffield Park	ARR	10:05	11:25	12:20	1:15	2:10	3:05

Saturday Afternoon

* Service terminates here

Set		C	A	B	C	A
Sheffield Park	DEP	1:35	2:30	3:25	4:20	5:15
Horsted Keynes	DEP	1:55	2:50	3:45	4:40	5:35
Kingscote	DEP	2:12	3:07	4:02	4:57	5:52
East Grinstead	ARR	2:20	3:15	4:10	5:05	6:00
East Grinstead	DEP	2:50	3:45	4:40	5:35	6:15
Kingscote	DEP	3:10	4:05	5:00	5:55	6:25
Horsted Keynes	DEP	3:45	4:40	5:35	6:10 ARR*	6:40
Sheffield Park	ARR	4:00	4:55	5:50		6:55

Train Timetables

Sunday Morning

Set		C	A	B	C	A	B
Sheffield Park	DEP		9:30	10:10	10:50	11:45	12:40
Horsted Keynes	DEP		9:47	10:27	11:10	12:05	1:00
Kingscote	DEP		10:02	10:42	11:27	12:22	1:17
East Grinstead	ARR		10:10	10:50	11:35	12:30	1:25
East Grinstead	DEP		10:30	11:15	12:10	1:00	1:55
Kingscote	DEP		10:46	11:30	12:25	1:20	2:15
Horsted Keynes	DEP	9:50	11:10	12:05	1:00	1:55	2:50
Sheffield Park	ARR	10:05	11:25	12:20	1:15	2:10	3:05

Sunday Afternoon

* Service terminates here

Set		C	A	B	C
Sheffield Park	DEP	1:35	2:30	3:25	4:20
Horsted Keynes	DEP	1:55	2:50	3:45	4:40
Kingscote	DEP	2:12	3:07	4:02	4:57
East Grinstead	ARR	2:20	3:15	4:10	5:05*
East Grinstead	DEP	2:50	3:45	4:40	
Kingscote	DEP	3:10	4:05	5:00	
Horsted Keynes	DEP	3:45	4:40	5:20	
Sheffield Park	ARR	4:00	4:55	5:35	



Model Railway Weekend

31 July - 1 August



Event Guide
2021

BLUEBELL-RAILWAY.COM

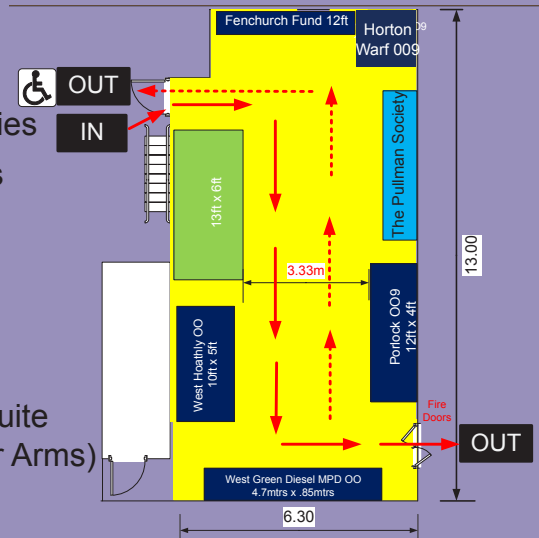
BLUEBELL-RAILWAY.COM

Sheffield Park Station Platforms

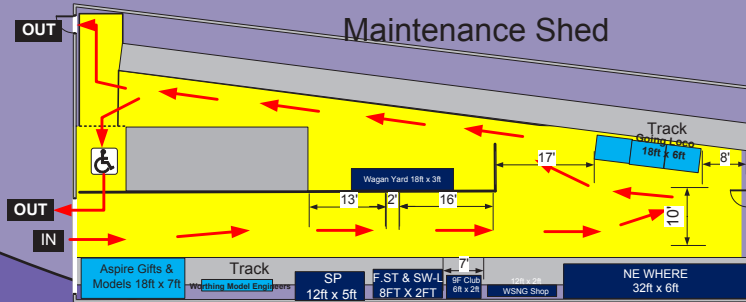
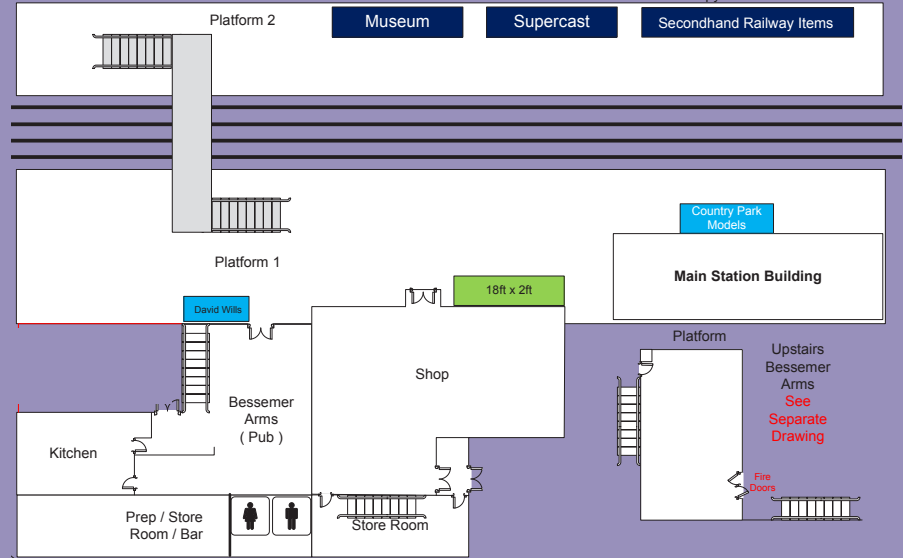
Key

- Layout
- Trade and Societies
- One way systems
- To be confirmed

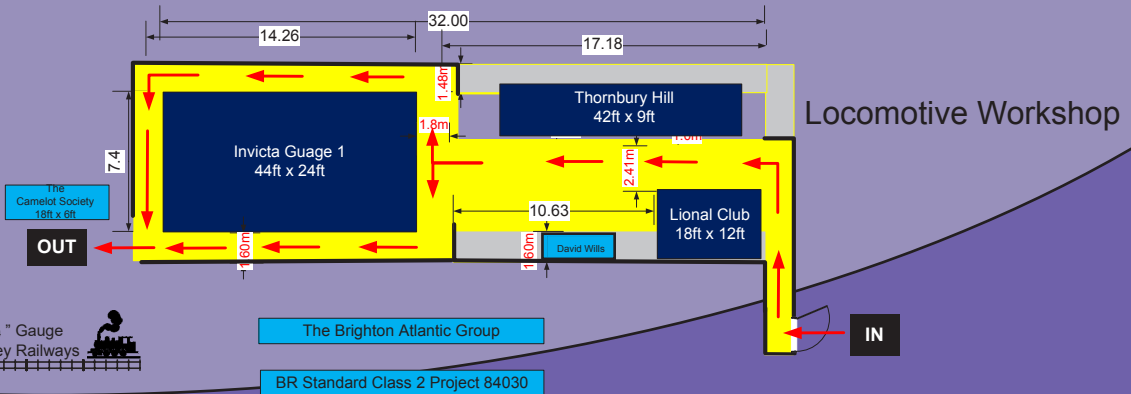
The Birch Grove Suite
(Above The Bessemer Arms)



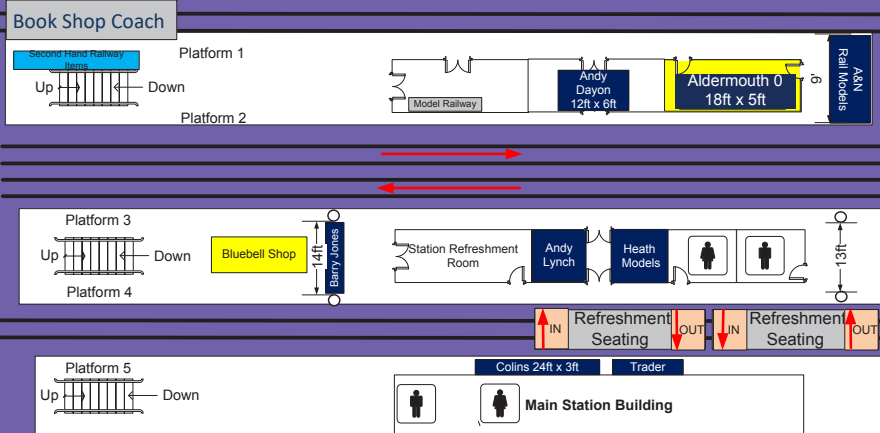
Both under the canopy



7 1/4" Gauge
Bentley Railways



Horsted Keynes Station Platforms and Rooms



Carriage and Wagon Workshop

