

**200**<sup>TM</sup>  
Years of Train Travel  
Since 1825

**BLUEBELL**<sup>®</sup>  
**RAILWAY**

A UNIQUE OPPORTUNITY FOR YOUR SCHOOL  
**RAILWAY 200**  
**AT THE BLUEBELL RAILWAY**



**RAILWAY 200 @ BLUEBELL RAILWAY**

**IN PARTNERSHIP WITH**

*With thanks to National Lottery Players*



**HS2**



**The RAILWAY Magazine**

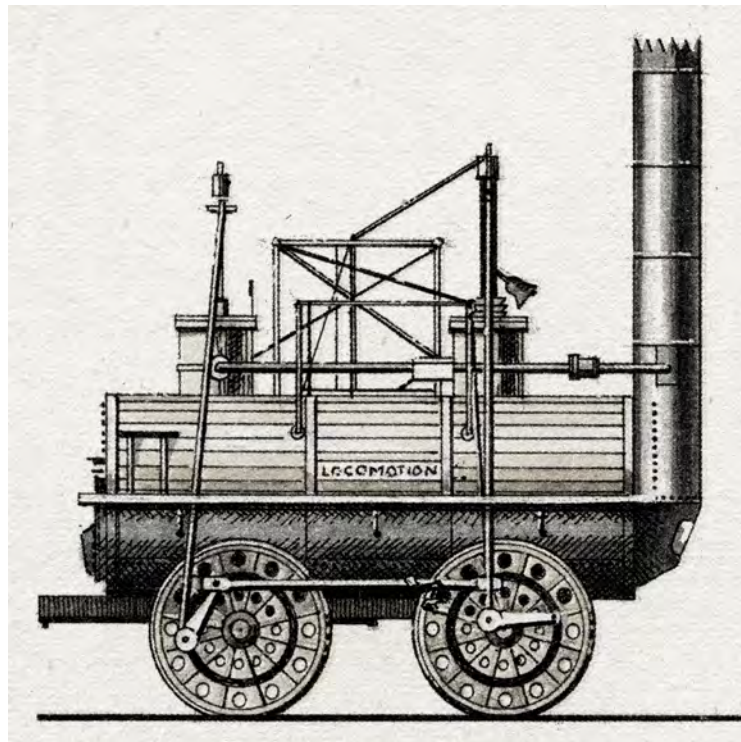




# WHAT IS RAILWAY 200?

# EDUCATION CONTENT

2025 marks the 200th anniversary of the opening of the Stockton to Darlington Railway, the world's first public railway. It changed the world.



Public railways allow anyone to travel or transport goods at a published fare. They accelerated the industrial revolution, as raw materials were transported to factories and finished goods were taken to markets or ports. Railways allowed great cities to emerge; the population of London grew from 1.6 million people in 1821 to 7.4 million in 1921 because fresh food could be transported from afar quickly and cheaply, whilst urban and underground railways allowed Londoners to travel around their city, creating a huge integrated economy. Railways allowed ordinary people to travel around the country, leading to the massive expanding of seaside resorts like Blackpool, Southend and Brighton. In North America, railways opened up the prairies and allowed American grain to be exported worldwide and transcontinental routes allowed economic activity to operate at national and international, rather than local, scale. Railways even standardised time.

The story of railways is the application of science through engineering to create economic growth and social development. And the story continues, with rail and mass transit systems set to play an essential role in land transport through the twenty first century as Britain moves to a net zero carbon economy.

Railway 200 @ Bluebell Railway explores all these issues, bringing the curriculum to life and exposing young people to the career opportunities offered by the transport and logistics sector.

## Event Details

- STEM | History | Careers | Safety | Wellbeing
- Suitable for years 5 and 6, year 8 and 6<sup>th</sup> Form
- Mon, Tues, Wed - 2nd June to 2nd July
- Fully structured day with multiple activities
- Separate days for different year groups and SEN

## Why Your School Should Attend

- Educational, inspirational and fun
- Bring an entire year group
- Heavily subsidised - entry just £5 per pupil
- Free travel to Bluebell on Southern & Thameslink
- Travel grants available for coach arrivals

## Next Steps

Click [here](#) to fill in our Expression of Interest form. When completing the form, please let us know whether any of your party has accessibility requirements. For SEN pupils, please indicate whether a visit on a mainstream education day or a quieter day with a less structured agenda would be more appropriate for you pupils.

Questions? Please email [railway200event@bluebell-railway.com](mailto:railway200event@bluebell-railway.com)

**Fully-timetabled Day · Risk Assessments · Free Coach Park · Digital Work Packs**

So much to see, do and experience



**VOLUNTEERING**  
Get involved in something for fun, learn life skills and make friends.



**FUN**  
See a working steam engine. Ride on our railway. A day out in the beautiful High Weald



**SAFETY**  
Stay safe around the railway.



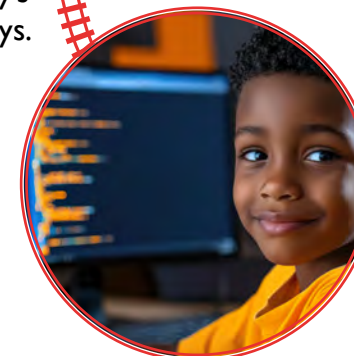
**TECHNOLOGY**  
See the equipment used to build and maintain today's railways.



**CAREERS**  
Understand the jobs available in rail and logistics and how to get into the sector.



**ENVIRONMENT**  
How will public transport help achieve net zero?



**STEM**  
Understand the maths, science and engineering that makes railways possible.



**HISTORY**  
How did the invention of railways change the world economically, socially and politically?

**Food Outlets · Disabled Toilets · Wheelchair-accessible Heritage Carriages**

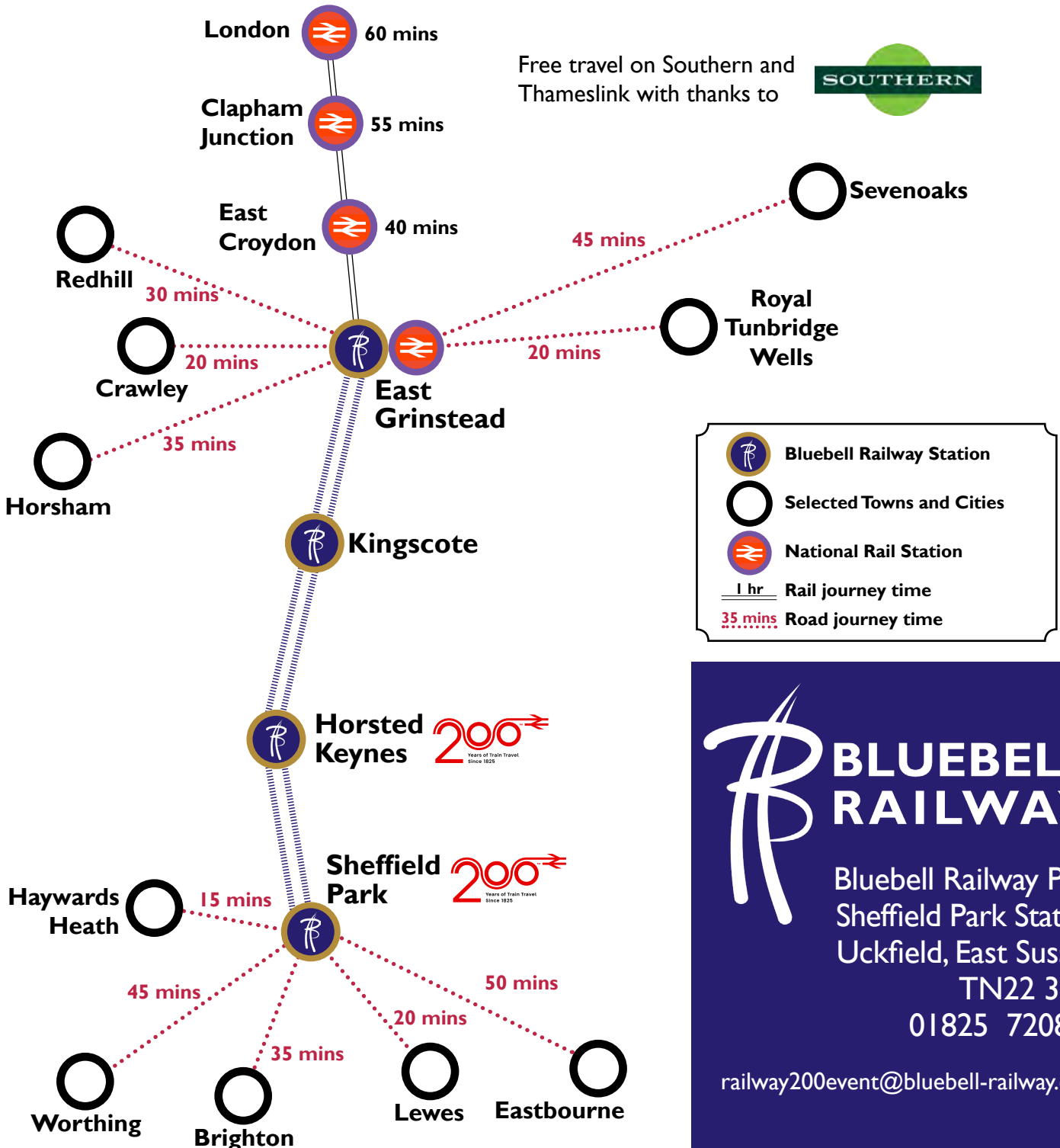
# EASY TO GET TO

FROM LONDON, SURREY, KENT AND SUSSEX

**School visits to Railway 200 will start at either East Grinstead or Sheffield Park.**

Our station at East Grinstead is 150m from the national rail station, making it easy to arrive by train. Coach drop off (by arrangement) is also possible. Trains to East Grinstead run from Victoria and call at Clapham Junction, East Croydon and then stations through Oxted to East Grinstead. We will operate a shuttle service from our station at East Grinstead to Horsted Keynes and the Railway 200 event.

Schools from the South Coast should arrive by road at Sheffield Park where there will be parking for coaches.




**BLUEBELL RAILWAY**  
 Bluebell Railway PLC  
 Sheffield Park Station  
 Uckfield, East Sussex  
 TN22 3QL  
 01825 720800  
[railway200event@bluebell-railway.com](mailto:railway200event@bluebell-railway.com)  
[www.bluebell-railway.com](http://www.bluebell-railway.com)