

## 9F in 9 Days

Words: Andy Taylor and Tom Newble

Photos: Andy, Tom, Kieth, John, Simon



The photo above, from Tom, shows the front end of 92240 residing in the milk dock.

It has been a busy early quarter in 2025, for the Awake the Giant team who are working on overhauling and restoring BR 9F 92240. If you are interested in joining the team and being involved, then please get in touch with the Team Leader Andy by emailing [Andy.Taylor@bluebell-railway.co.uk](mailto:Andy.Taylor@bluebell-railway.co.uk). At present, the front end of 92240 resides in the milk dock and exposed to the elements whilst the tender remains in the maintenance shed, although has seen the outdoors during the weekly shunts. It is hoped that the team are able to keep the tender, and remain working on it undercover, in the maintenance shed.

### **The 9 Days for 92240**

#### **Friday 17<sup>th</sup> January**

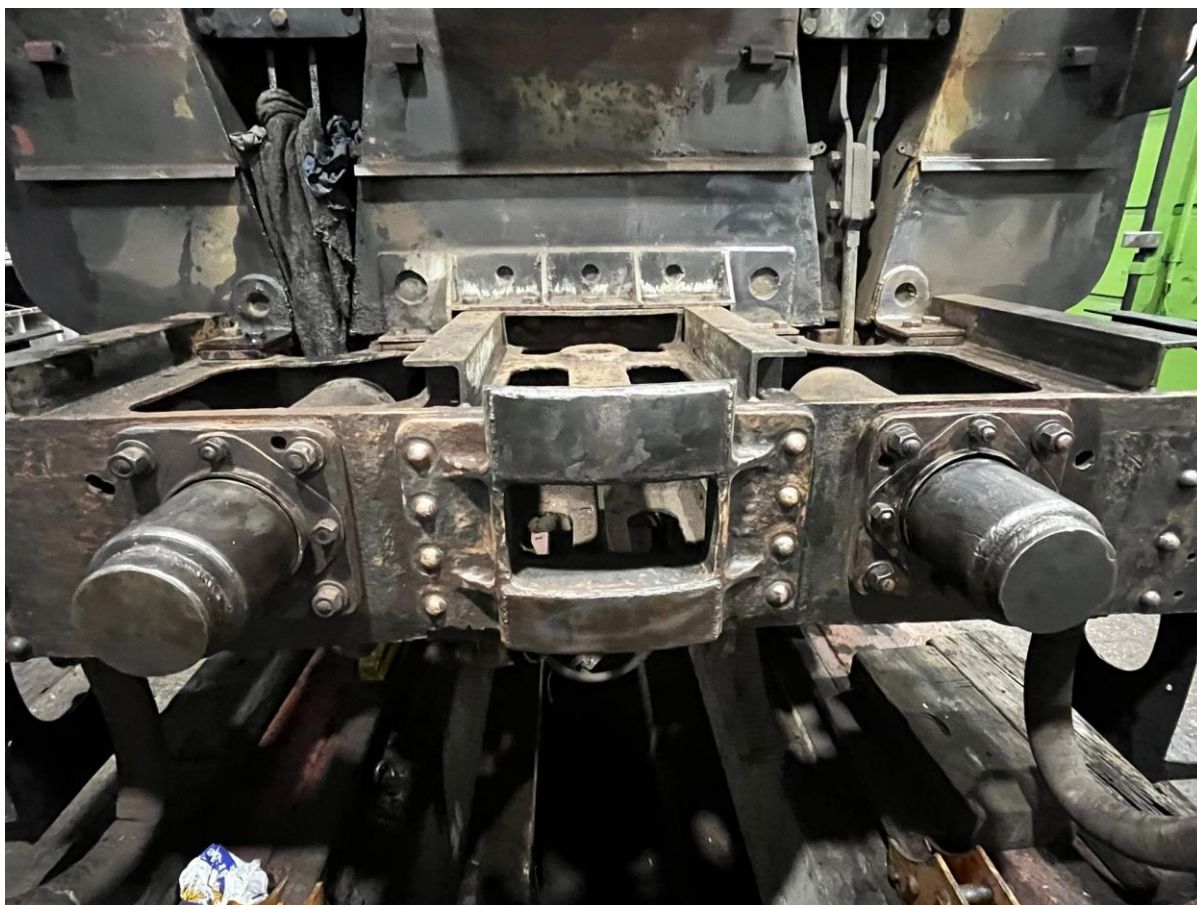
The weekly working party took place. Kieth was working on the start of degreasing the axle boxes and making new gaskets for each box. Martin and Howard worked on prepping the drag box and removing the remains of rivets which were in the buffer beam.

#### **Saturday 18<sup>th</sup> January**

This was the first big gathering of team members since the annual team meeting in the previous December, on a very cold subzero day! There was seven team members including a new recruit. Tom and Andy had paired up and started work on the drag box on the front of the tender. They used a range of scrappers and wire brushing with paraffin and white spirit to remove grease and polish up the worked area. During this party Kieth continued, from the

Friday working parties, on making new gaskets and degreasing the axle boxes. Peter and Rick work on wet and dry sanding the tender sides whilst Duncan and Simon continued working from the pit in the maintenance shed on cleaning underneath the tender. The photos, from Andy and Keith, below show the before and after the first day' work on the drag box.





#### **Thursday 23<sup>rd</sup> January**

An Inspector had visited the railway to test a number of attributes on locos, details available on the Bluebell's website. On this day, the Inspector had been assigned to undertake 'NDT' Non-Destructive Testing on the tender 6 axels. The team are pleased to announce that 92240 passed.

#### **Thursday 30<sup>th</sup> January**

The midweek shunt took place. The front end remains in the milk dock. The tender was taken outside before being shunted into the front of the adjacent road in the maintenance shed.

#### **Saturday 1<sup>st</sup> February**

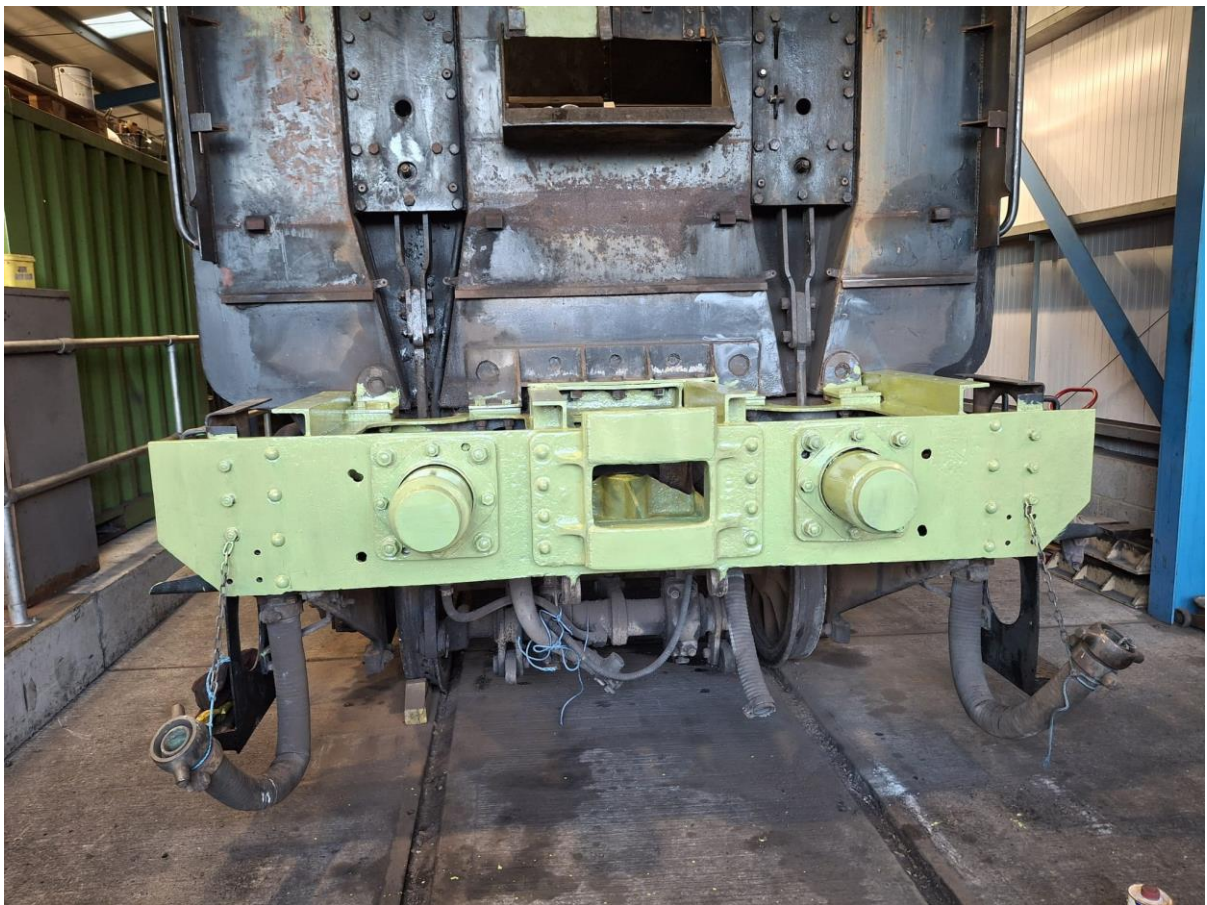
This Saturday was another large working party, on the tender of 92240. Andy and Tom had again paired up with Ken to continue working on the drag box. Work today consisted of degreasing then scrapping and wire brushing the inner sections before adding a coating of primer. The middle section proved very tricky and indeed required needle gunning. Peter continued the wet and dry rubbing down whilst Martin and John worked on the back of the tender and some additional metal work and applying coats of primer and top coats. Duncan and Simon continued in the underneath, cleaning and wire brushing. Due to the tender having being shunted midweek, it was on the adjacent road with no pit meaning, Simon and Duncan could work on the fiddlier areas including the corners and working around the braking gear. The photos below, from Simon, below shows the cleaning by Simon and



Duncan under the tender.



The next photo, from Tom, shows the drag box with the first coat of primer applied.



**Friday 6<sup>th</sup> February**

The weekly working party took place and Simon and Duncan continued on cleaning the underneath of the tender.

## **Sunday 23<sup>rd</sup> February**

The team had a painting demonstration with a paint expert (Lewis Nodes) from the Bluebell Railway. Members of the team learned about mixing the correct quantities of paints for the correct finish and the best way to apply the top coats and gloss for later on in the restoration. The photo from Kieth, below, shows the back of the tender after the painting session.



## **Friday 7<sup>th</sup> March**

The weekly working party was back. This time consisting of Howard regreasing the axle boxes. Mark and Phil continued working on painting the water chambers and Martin welding the top edge of the tender and then the welds got ground down and primer applied.

## **Saturday 8<sup>th</sup> March**

Mark and Phil continued working on the water space, in the tender and painting more ceilings of the water chambers.

## **In Other News**

The team have new stickers for our younger fans, so when the stall is around, why not pop over and pick one up! Ken has been working on the merchandise selection and has become very popular with members and visitors since it launched. Merchandise is readily available to buy at the majority of galas at the Bluebell Railway. Merchandise can be brought from 92240's stand as well as in the carriage shop. Mark has been working extremely hard on publishing the recent edition of the 'Giant Gazette'. If you are interested in subscribing, please contact: [giantgazette92240@yahoo.co.uk](mailto:giantgazette92240@yahoo.co.uk).

Tom has continued to work on building the archive of 92240. If you have any material on 92240 that you would like to add to the collection, please contact Tom at [Awakethegiant@outlook.com](mailto:Awakethegiant@outlook.com). Tom has managed to secure the use of a hut at the railway,

meaning 92240 now has a pop-up shop and will be on Sheffield Park, platform one. The annual photography competition will be running again, launching at Branch Line Gala. More details will also be available on the Bluebell website.

### **Buy 92240 a Gift!**

The team are grateful in any form of support and donations towards the restoration of 92240. We have recently launched 'Buy 92240 a Gift' where supporters are able to purchase items which will be used in the restoration rather than donate a monetary gift, from our Amazon Wishlist. Currently, we are the only locomotive group doing this at the Bluebell Railway. If you would like to browse 92240's wish list, please click on the link [https://www.amazon.co.uk/hz/wishlist/ls/2PVHCY0MYYHB?ref=wl\\_share](https://www.amazon.co.uk/hz/wishlist/ls/2PVHCY0MYYHB?ref=wl_share) or scan the QR code below.

